



SCOTT W. LINDQUIST, MD, MPH, DIRECTOR
345 6TH STREET, SUITE 300
BREMERTON, WA 98337-1866
(360) 337-5235

News Release

FOR IMMEDIATE RELEASE
January 14, 2009

CONTACTS: Ross Lytle
(360) 337-5677
Stuart Whitford
(360) 337-5674

Health District Kicks Off Sinclair Inlet Restoration Project

Partnership Formed to Clean Up Sinclair Inlet

BREMERTON, WA — The Sinclair Inlet Restoration Project will kick off with a public meeting on Thursday, January 22, 2008, from 6:30 p.m. to 8:30 p.m. at the Givens Community Center, 1026 Sidney Avenue, in Port Orchard.

The purpose of the project is to reduce fecal coliform bacteria contamination of Sinclair Inlet streams and marine waters. Elevated fecal coliform bacteria are an indicator of the presence of bacteria and viruses that can make people sick. Potential fecal pollution sources include stormwater runoff, failing onsite sewage systems, failing municipal sewer system infrastructure, and animal waste.

The project will investigate all fresh water drainages to Sinclair Inlet extending from the Manette Bridge south through Gorst, then northeast to Wautauga Beach, then south to the Manchester area. A map of the project area is on Page 3 of this release.

Partnering on the project are the Health District, the Kitsap Conservation District, and the Kitsap County Surface and Stormwater Management Program.

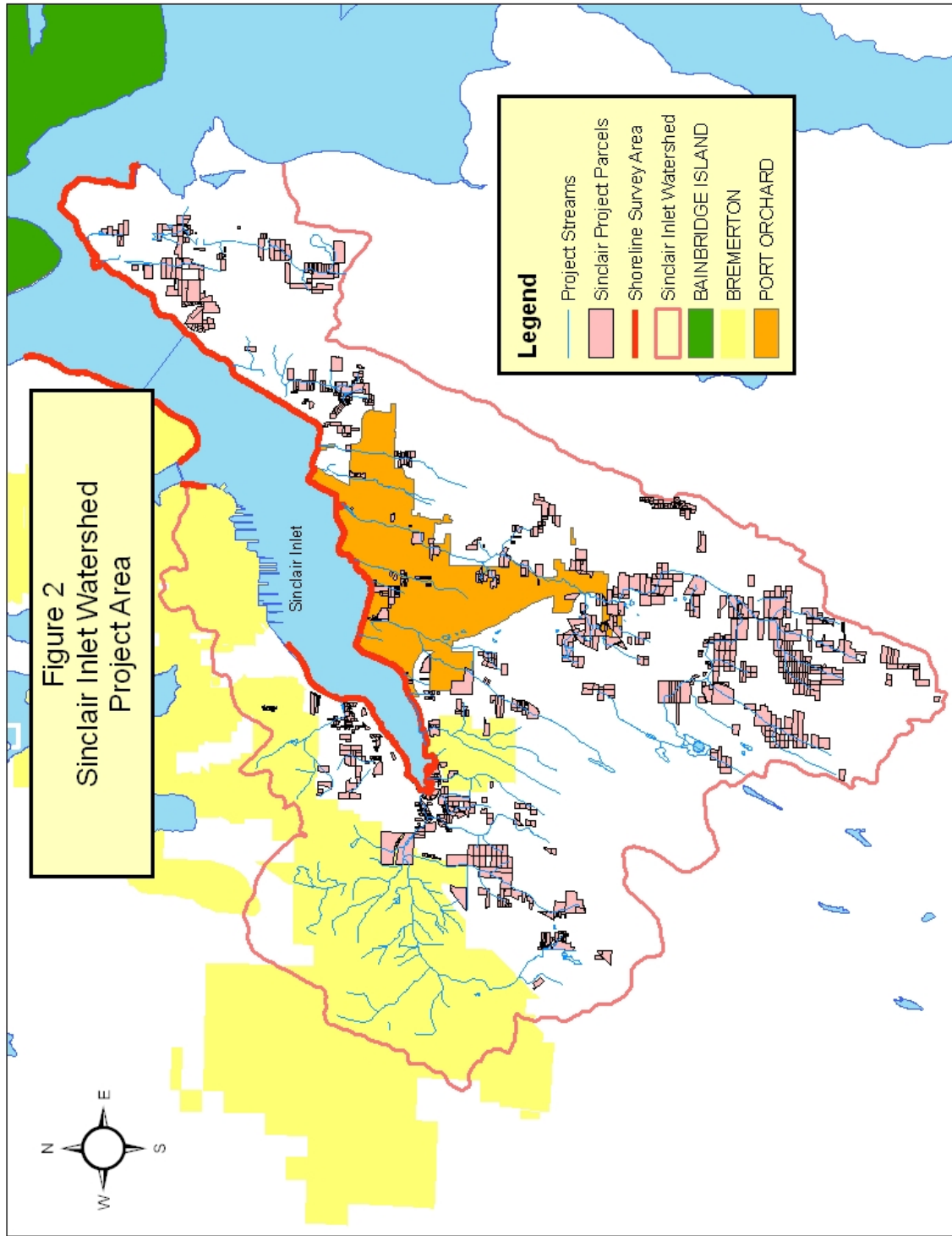
Health District bacteriological data, collected at Annapolis, Beaver, Blackjack, Gorst, Karcher and Sacco creeks, show continued contamination in the watershed by fecal coliform bacteria. In addition, three of thirteen marine water stations fail the Washington State Primary Contact Standard for fecal coliform bacteria.

--- MORE Health District Kicks Off Sinclair Inlet Restoration Project --- Page 2

As a result, six Sinclair Inlet streams and its marine waters are listed for fecal coliform contamination on the state Department of Ecology's 303(d) list of impaired waters. A water quality cleanup plan (Total Maximum Daily Load) is currently being developed by the Washington State Department of Ecology for both Sinclair Inlet and Dyes Inlet. The restoration project is a key component of this state cleanup plan.

For more information, contact Ross Lytle at the Health District at (360) 337-5677 or at lytler@health.co.kitsap.wa.us.

--- SEE SINCLAIR INLET WATERSHED MAP ON PAGE 3 ---



###