

Kitsap Board of Health COVID Update

Ally Power, MPH
Epidemiologist
Assessment & Epidemiology Program
February 1, 2022



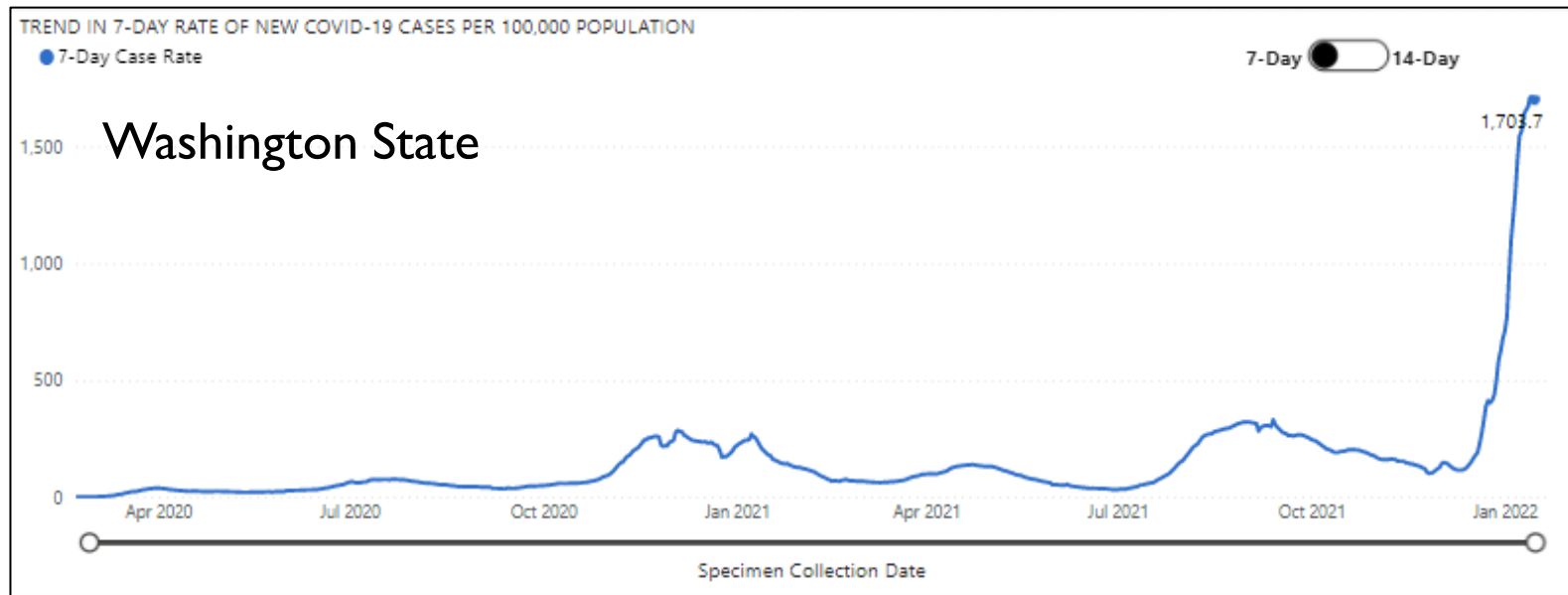
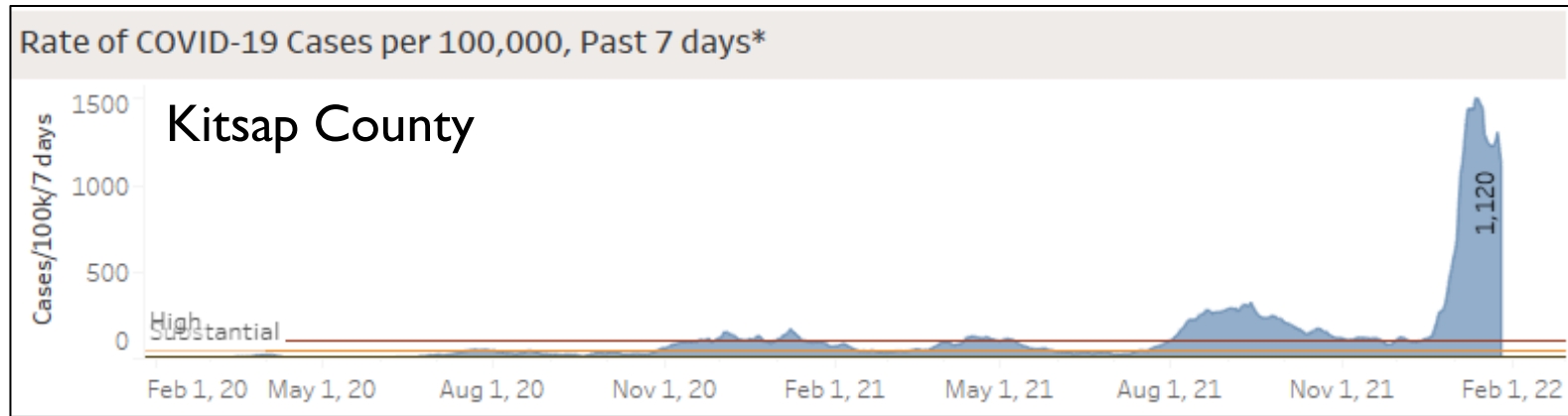
KITSAP PUBLIC HEALTH DISTRICT

Agenda

- Technical update
- Case rates & trends
- Hospitalizations & deaths
- Vaccination update



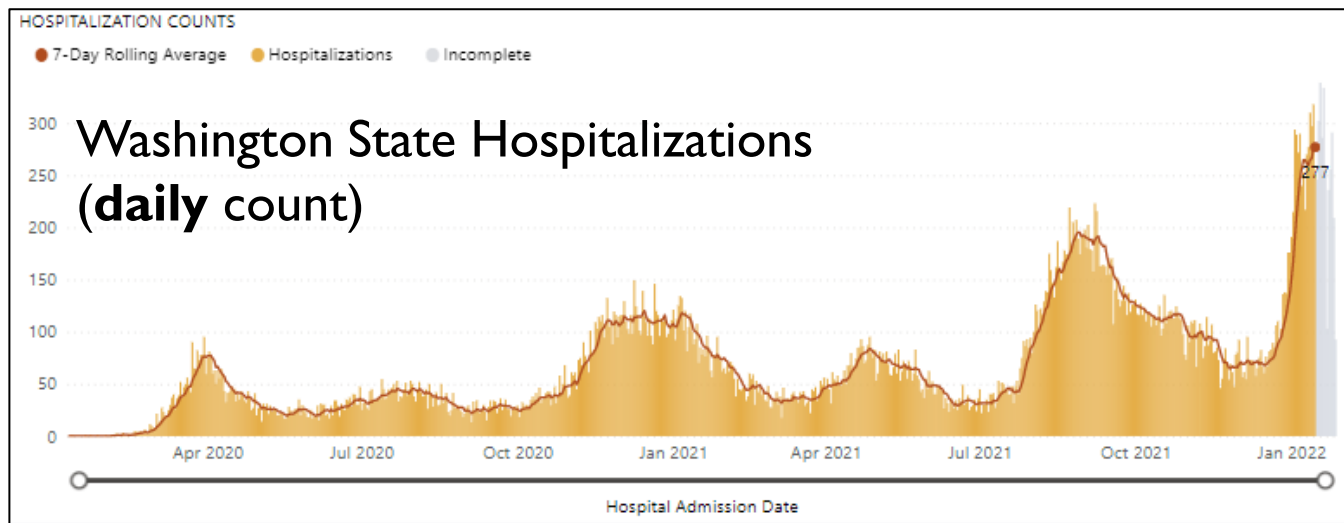
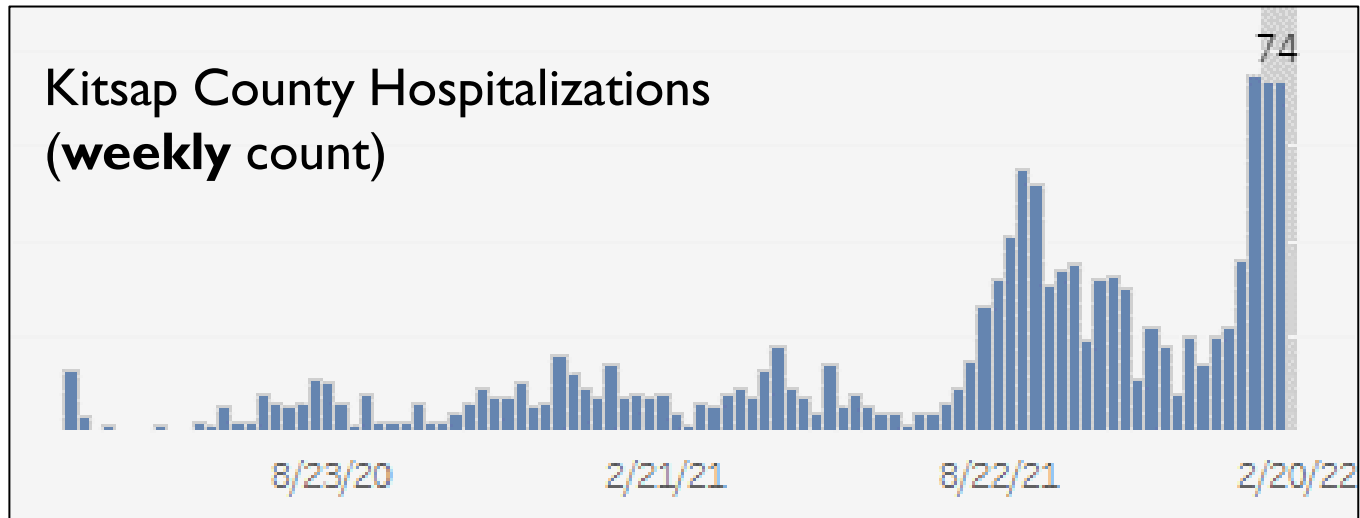
Case Rates & Trends



Sources: 1) Washington Disease Reporting System (WDRS); 2) WA DOH COVID-19 Dashboard as of 1/31/22.



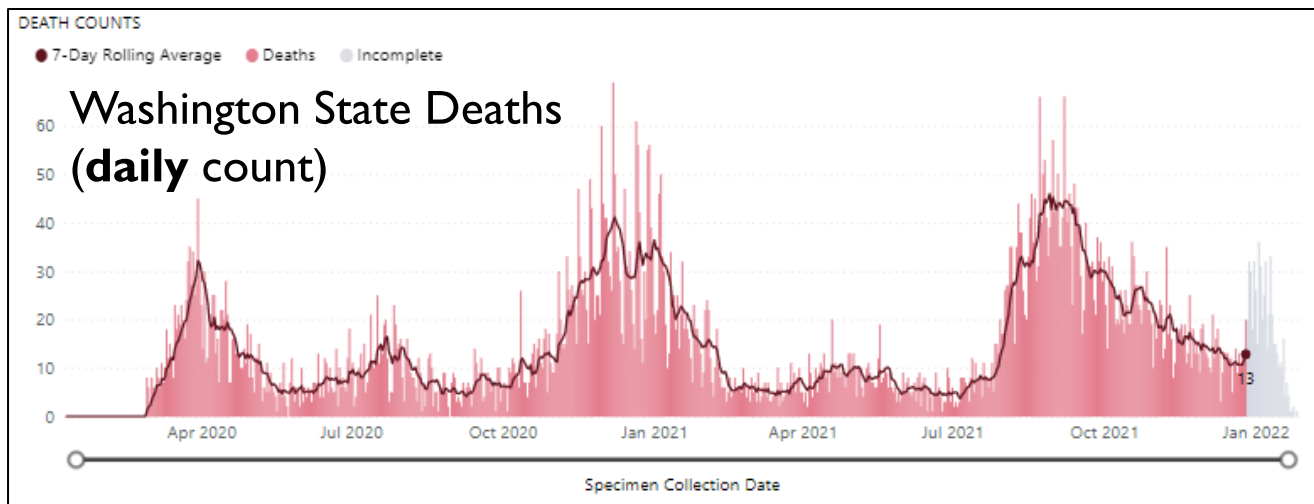
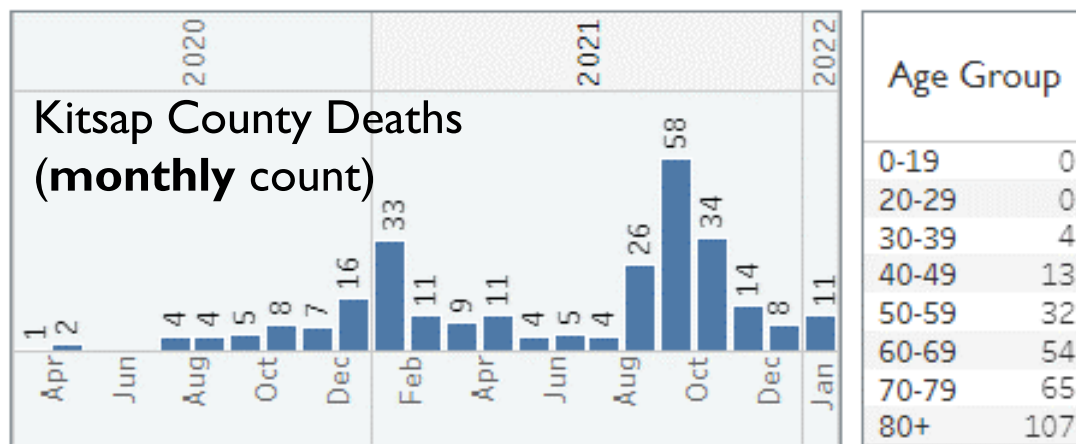
Hospitalizations



Sources: 1) Washington Disease Reporting System (WDRS); 2) WA DOH COVID-19 Dashboard as of 1/31/22.



Deaths



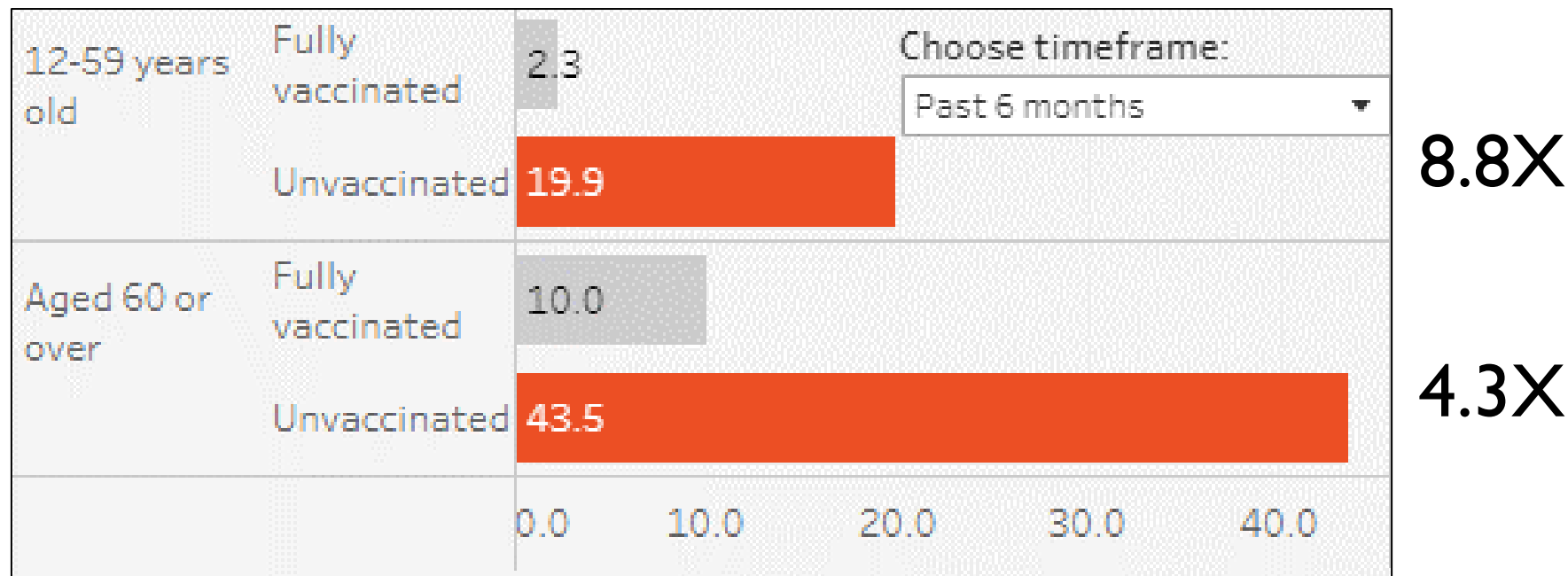
Sources: 1) Washington Disease Reporting System (WDRS); 2) WA DOH COVID-19 Dashboard as of 1/31/22.



Risk of Hospitalization by Vaccination Status

Hospitalization Rate per 100,000 by Vaccination Status

Risk Ratio

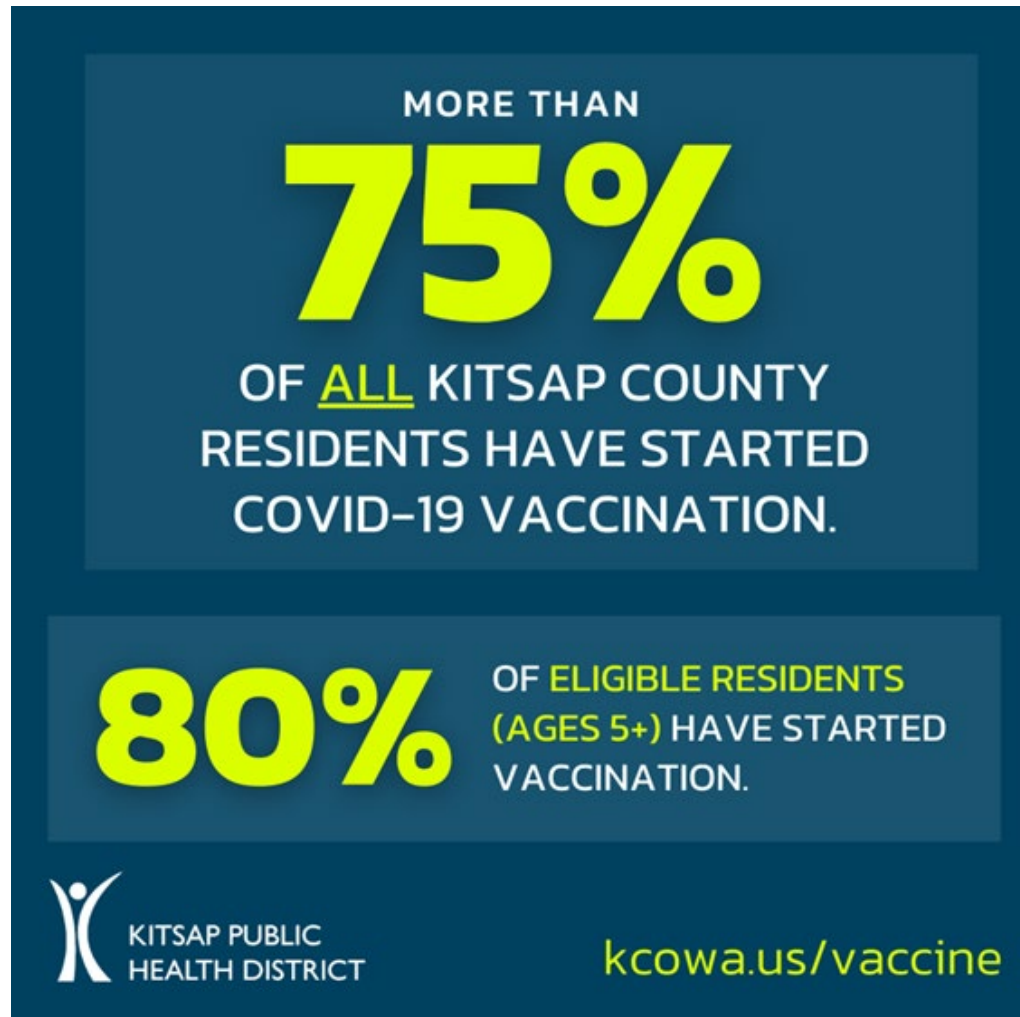


Sources: 1) Washington Disease Reporting System (WDRS); 2) WA State Immunization Information System (WA IIS) as of 1/22/22.



KITSAP PUBLIC HEALTH DISTRICT

Vaccination Update



Sources: 1) WA State Immunization Information System (WA IIS) as of 1/22/22; 2) Department of Defense (DoD) correspondence as of 1/24/22.