

Kitsap Board of Health COVID Update

Gib Morrow, MD, MPH
Health Officer, Kitsap Public Health District
September 28, 2021



KITSAP PUBLIC HEALTH DISTRICT

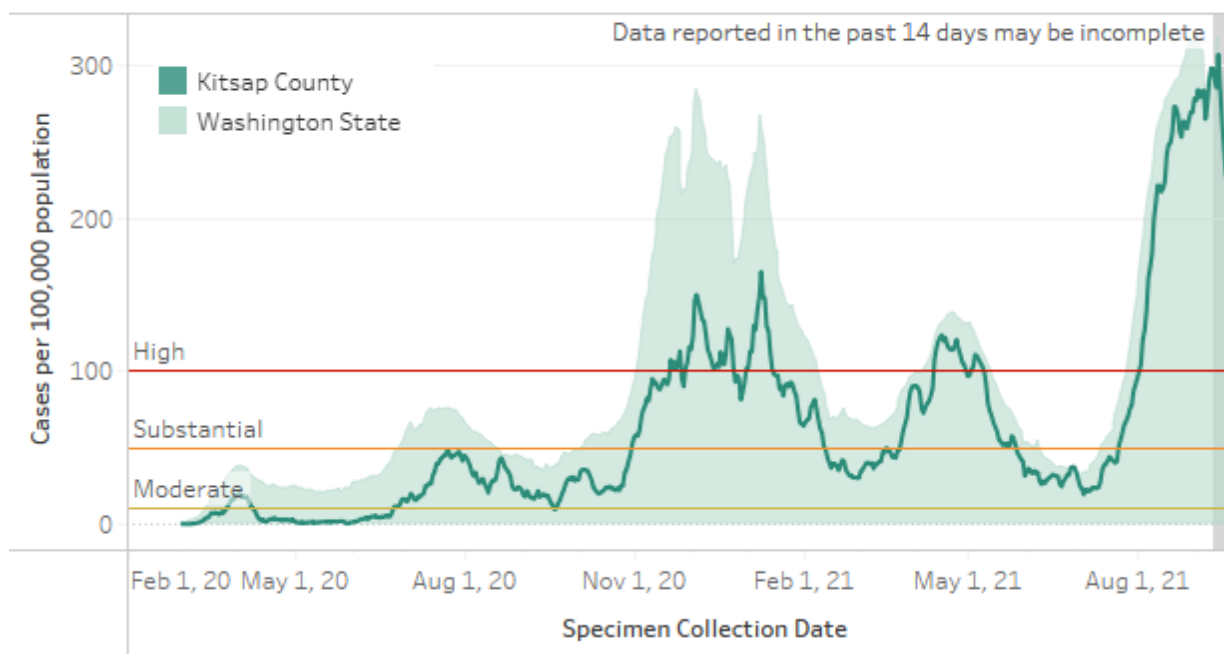
Slide Deck Contents

- Current SARS-CoV-2 Activity
- Hospitalizations and Deaths
- Outbreaks
- Vaccinations
- Cases among fully vaccinated vs. not fully vaccinated
- Schools



Recent COVID-19 Activity

Seven-day rate of confirmed and probable SARS-CoV-2 cases, Feb 2020 - Sep 19, 2021.



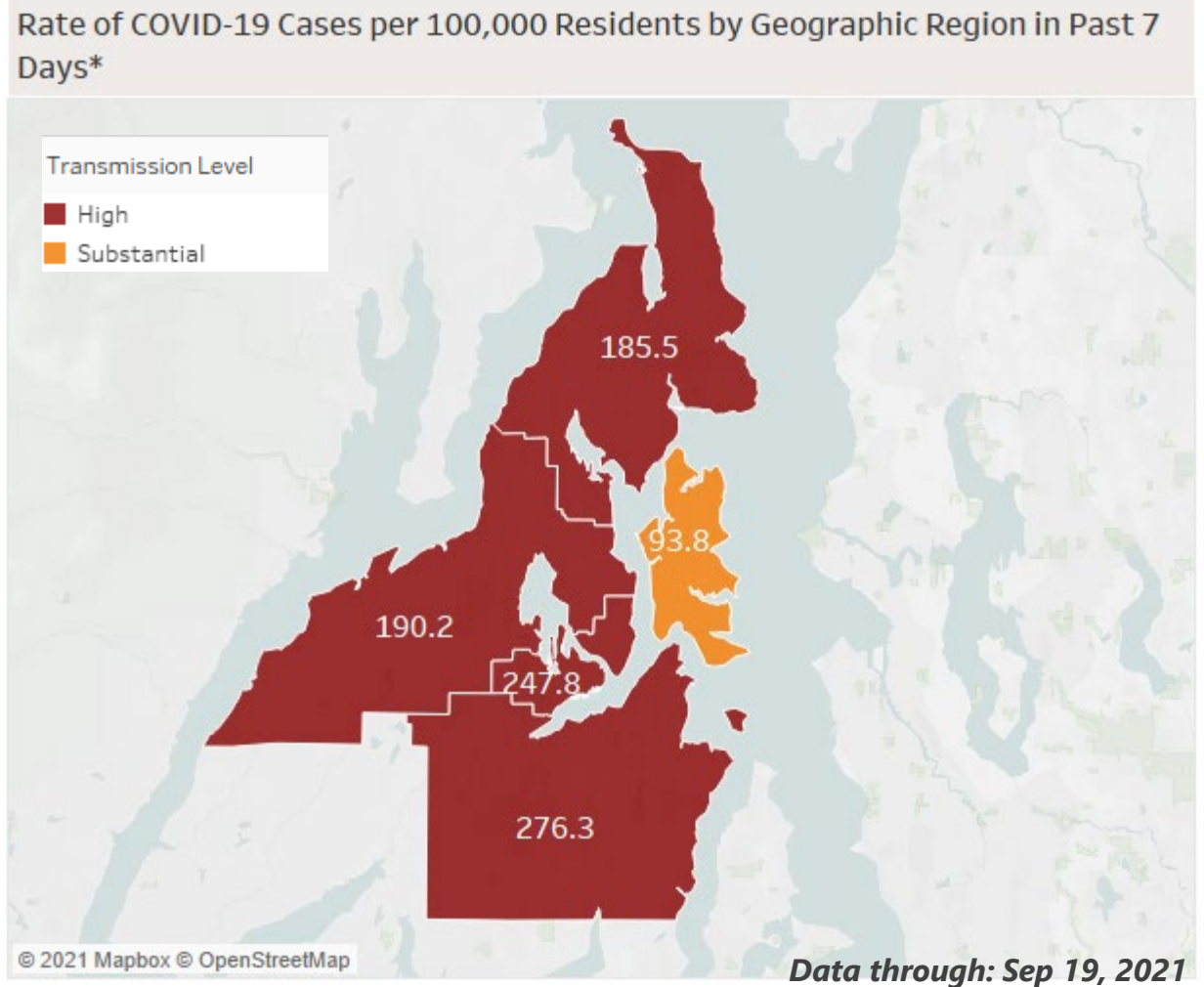
- Kitsap County remains in **very high COVID transmission**.
- Seven-day county rate 9/19: **215.7 per 100,000**
- Fortunately, rates appear to be beginning to drop.



Regional Activity



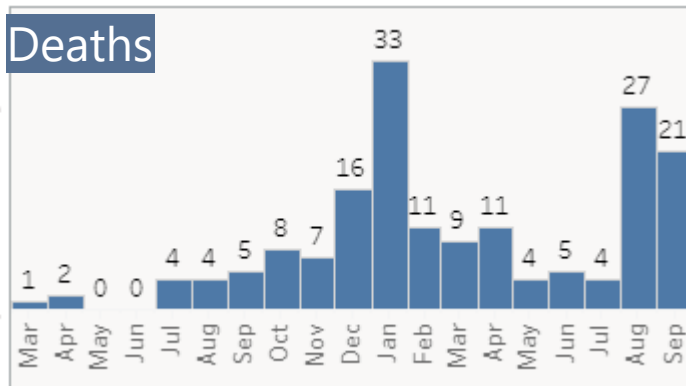
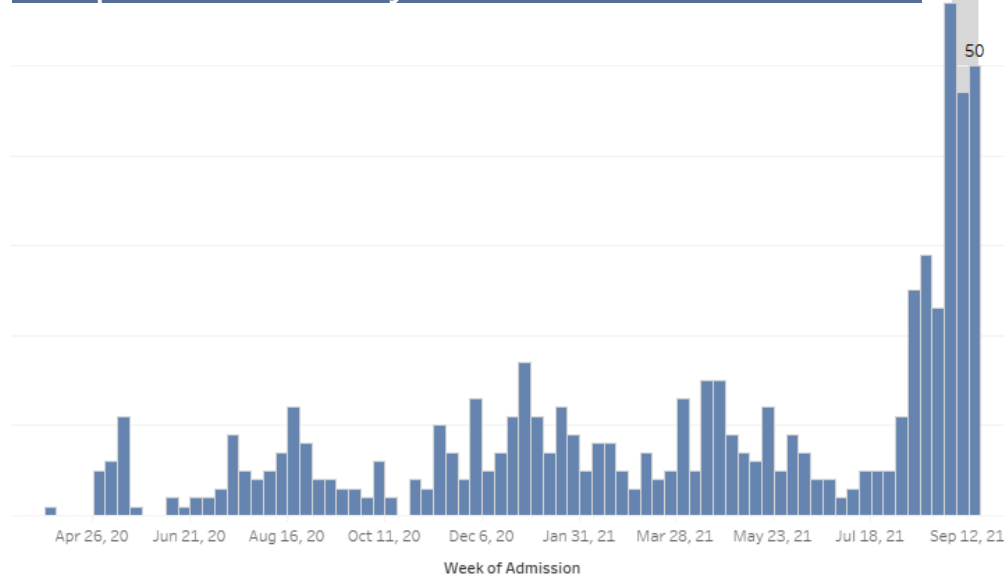
High transmission
observed in all
KPHD sub-regions
except Bainbridge.



Hospitalizations and Deaths

- **170 new COVID hospitalizations** reported 9/1 - 9/24.
 - 43 (25%) are under age 50.
- **~50% of ICU patients** at SMMC are COVID patients.
- 48 deaths reported in August and Sept (cumulative total = 172)
 - c.f., 9 deaths in Jun & Jul

Hospitalizations by Date of Admission



% of ICU Patients who are COVID Cases



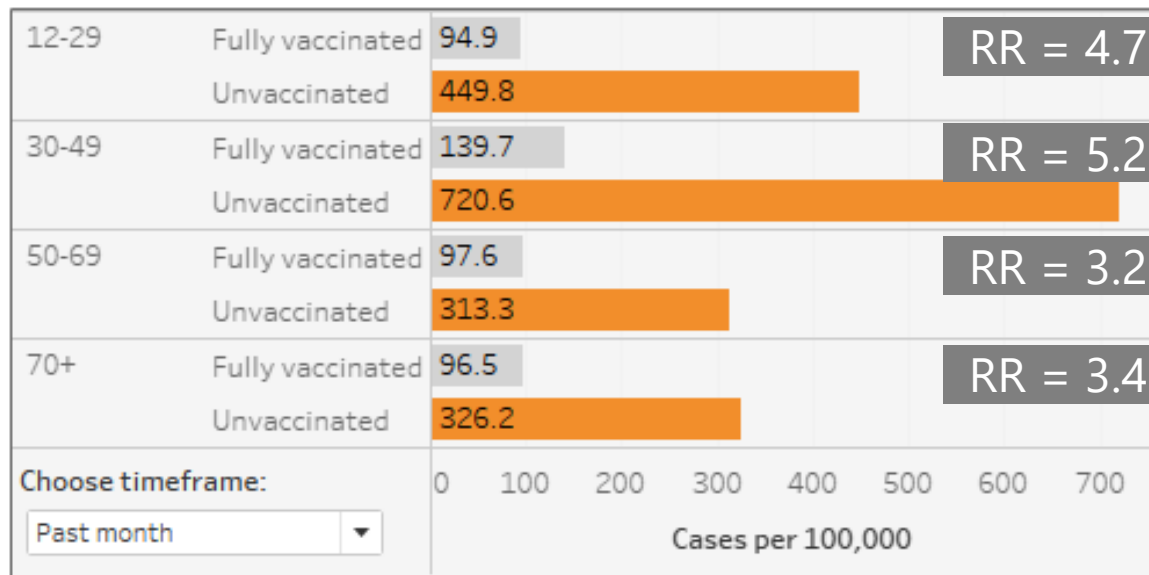
Outbreaks

- As of Sep 21, **38 active outbreaks**
 - **11 long-term care facilities** (184 residents, 58 staff)
 - **4 congregate living situations** (54 residents)
 - **2 health care facilities** (17 staff, 1 patient)
 - **4 schools** (11 students)
 - **3 workplaces** (13 staff)
 - **3 community events** (31 attendees)
 - **11 government** (151+ staff)
- 16 (42%) involve >10 cases
- 22 Bremerton/Central Kitsap, 8 South, 5 North, 1 Bainbridge, 1 OOI event, 1 unk

According to DOH's latest **Weekly COVID-19 Long-term Care Report** (published 9/21/2021), **782** Kitsap County COVID cases have so far been associated or likely associated with LTCFs. Of those **71** deceased. This is a nearly 10% case fatality rate among this vulnerable group.



Risk of COVID 4.3x Higher for Unvaccinated in Past Month



Relative risk
higher for
younger age
groups.



$$RR = \frac{\text{Probability of COVID in unvaxxed}}{\text{Probability of COVID in vaxxed}}$$

Data range: 8/19/2021 – 9/18/2021

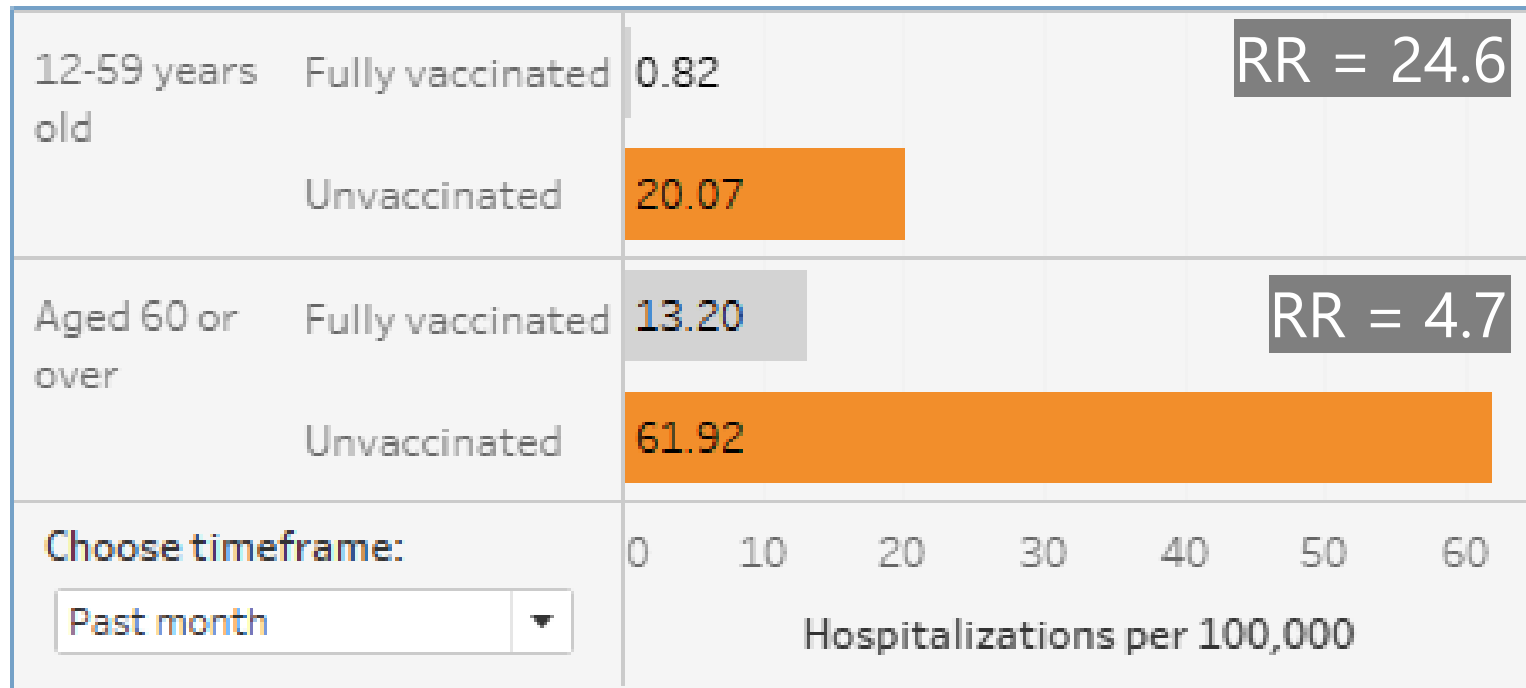
Fully vaccinated = 14 or more days after final dose of series

Unvaccinated = (a) No history of vaccination, OR (b) < 14 days from first dose

Partially vaccinated cases and population are excluded from this analysis for clarity.



Risk of COVID Hospitalization 24.6x Higher for Unvaccinated Aged 12-59



Data range: 8/19/2021 – 9/18/2021

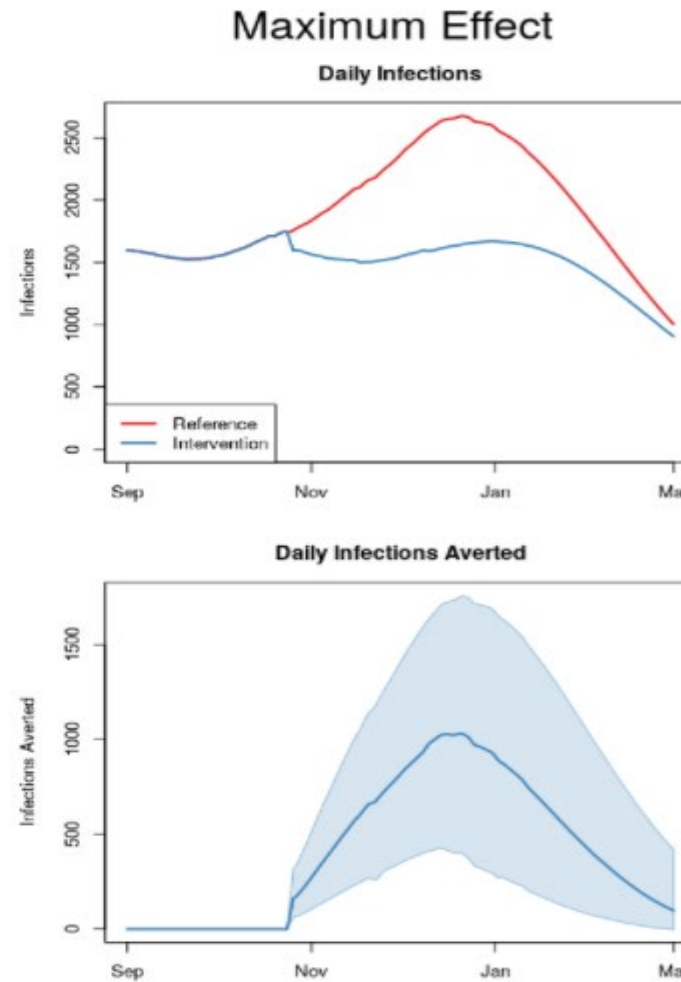
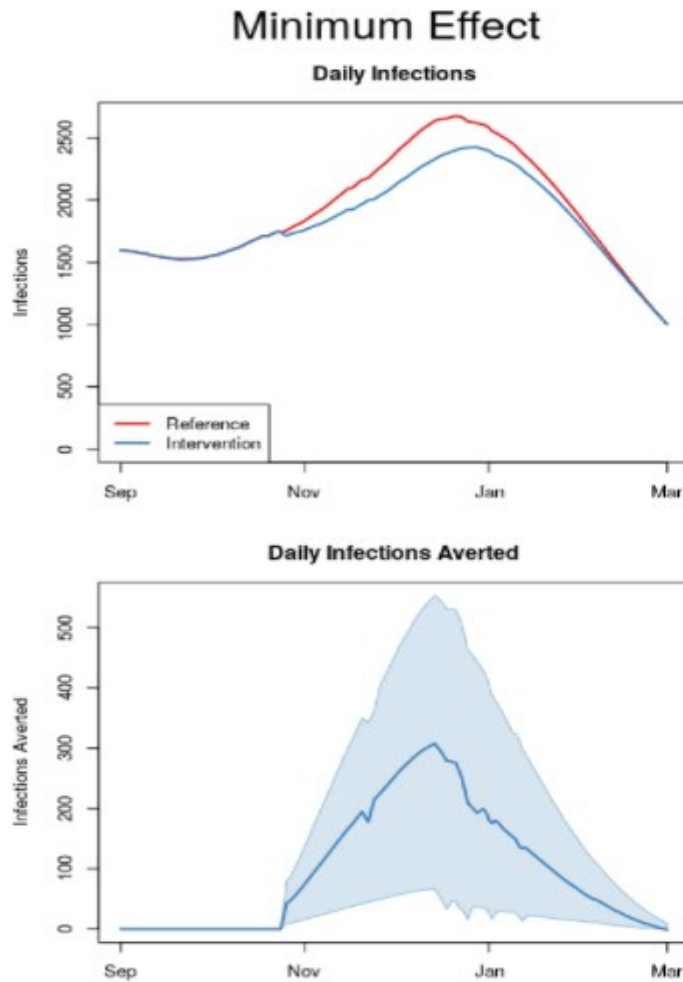
Fully vaccinated = 14 or more days after final dose of series

Unvaccinated = (a) No history of vaccination, OR (b) < 14 days from first dose

Partially vaccinated cases and population are excluded from this analysis for clarity.



Predicted impact of vaccine mandates in King County



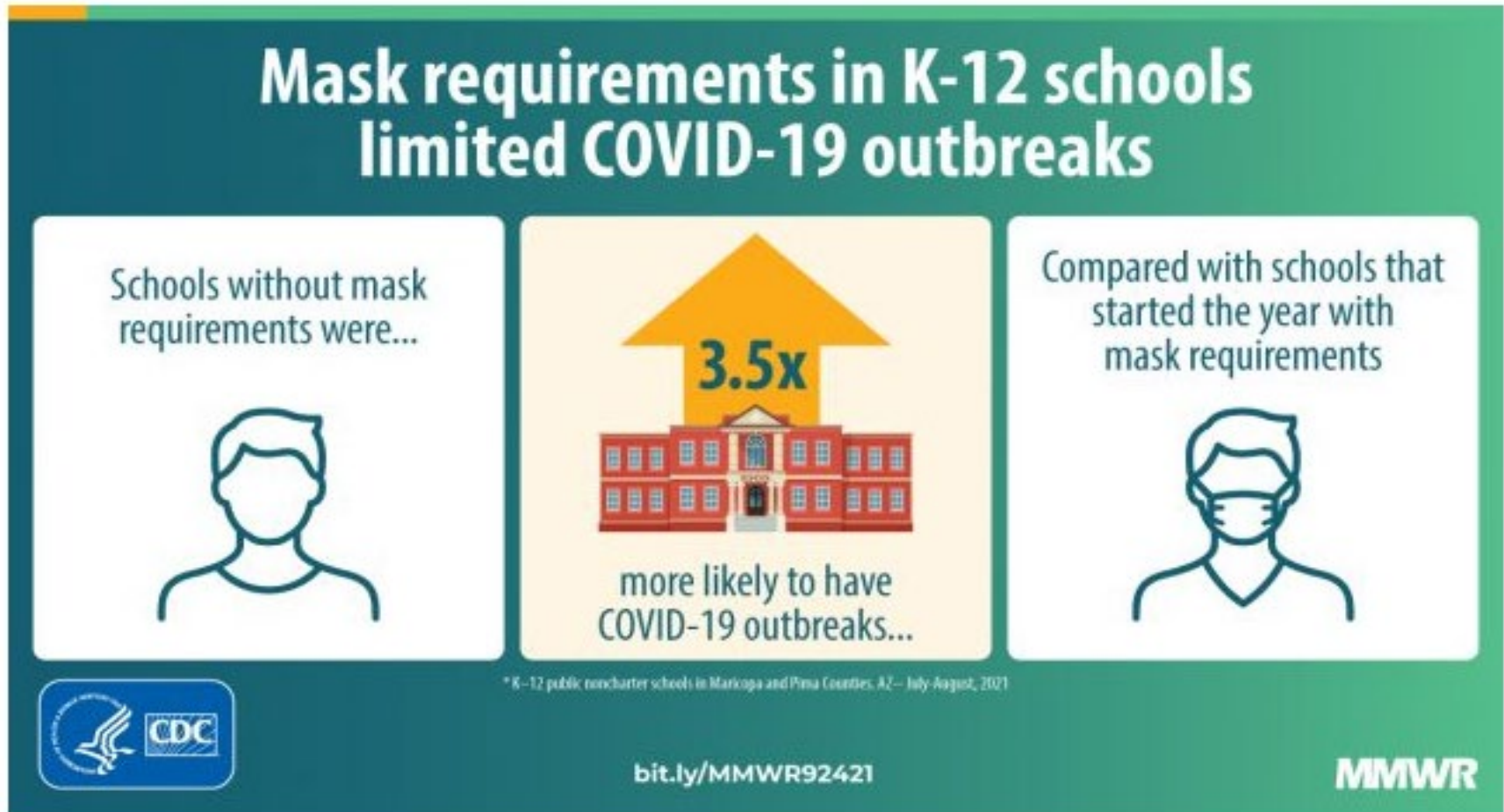
IHME modeling of King County Vaccine Mandates Prevent in 6 months:

- 18-76K cases
- 420-1760 hospitalization
- 63-260 deaths

Figure 1: Infections and averted infections across scenarios



Association Between K–12 School Mask Policies and School-Associated COVID-19 Outbreaks — Maricopa and Pima Counties, Arizona, July–August 2021



KPHD Health Board Considerations

1. Take no action and allow the current situation to play out.
2. Make a formal Health Board recommendation/resolution for all local governmental agencies to require vaccination for their employees.
3. Make a formal Health Board recommendation/resolution for all private businesses to require vaccination for their employees and/or require proof of vaccination for entry into indoor public places.
4. Issue a formal Health Board / Health Officer order under the authority of RCW 70.05 to require employee vaccinations at governmental agencies.
5. Issue a formal Health Board / Health Officer order under RCW 70.05 to require all business open to the public, or indoor venues open to the public, to require proof of vaccination for entry.



Healthcare Organizations Supporting Vaccination Requirements-

Academy of Managed Care Pharmacy
American Academy of Ambulatory Care Nursing
American Academy of Child and Adolescent Psychiatry
American Academy of Family Physicians
American Academy of Nursing
American Academy of Ophthalmology
American Academy of PAs
American Academy of Pediatrics
American Association of Allergy, Asthma & Immunology
American Association of Clinical Endocrinology
American Association of Colleges of Pharmacy
American Association of Neuroscience Nurses
American College of Clinical Pharmacy
American College of Physicians
American College of Preventive Medicine
American College of Surgeons
American Epilepsy Society
American Medical Association
American Nursing Association
American Pharmacists Association
American Psychiatric Association
American Public Health Association
American Society for Clinical Pathology
American Society for Radiation Oncology
American Society of Health-System Pharmacists
American Society of Hematology

American Society of Nephrology
American Thoracic Society
Association for Clinical Oncology
Association for Professionals in Infection Control and Epidemiology
Association of Academic Health Centers
Association of American Medical Colleges
Association of Rehabilitation Nurses
Council of Medical Specialty Societies
HIV Medicine Association
Infectious Disease Society of America
LeadingAge
National Association of Indian Nurses of America
National Association of Pediatric Nurse Practitioners
National Council of State Boards of Nursing
National Hispanic Medical Association
National League for Nursing
National Medical Association
National Pharmaceutical Association
Nurses Who Vaccinate
Organization for Associate Degree Nursing
Pediatric Infectious Diseases Society
Philippine Nurses Association of America, Inc
Society of Gynecological Oncology
Society for Healthcare Epidemiology of America
Society of Hospital Medicine
Society of Infectious Diseases Pharmacists
Society of Interventional Radiology
Texas Nurses Association
The John A. Hartford Foundation
Transcultural Nursing Society
Virgin Islands State Nurses Association
Wound, Ostomy, and Continence Nurses Society



Ensuring Uptake of Vaccines against SARS-CoV-2

SIX TRIGGER CRITERIA FOR STATE COVID-19 VACCINATION MANDATES.

Covid-19 is not adequately contained in the state.

The Advisory Committee on Immunization Practices has recommended vaccination for the groups for which a mandate is being considered.

The supply of vaccine is sufficient to cover the population groups for which a mandate is being considered.

Available evidence about the safety and efficacy of the vaccine has been transparently communicated.

The state has created infrastructure to provide access to vaccination without financial or logistic barriers, compensation to workers who have adverse effects from a required vaccine, and real-time surveillance of vaccine side effects.

In a time-limited evaluation, voluntary uptake of the vaccine among high-priority groups has fallen short of the level required to prevent epidemic spread.



Schools

AGE GROUPS AGGREGATED (5-18)



High Transmission
among children aged
5-18 years.

KPHD monitoring at
least 5 school
outbreaks as of 9/24.

Data through 9/16/2021



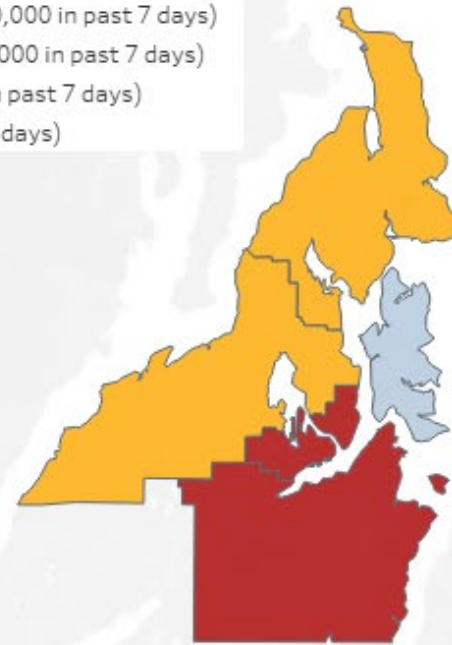
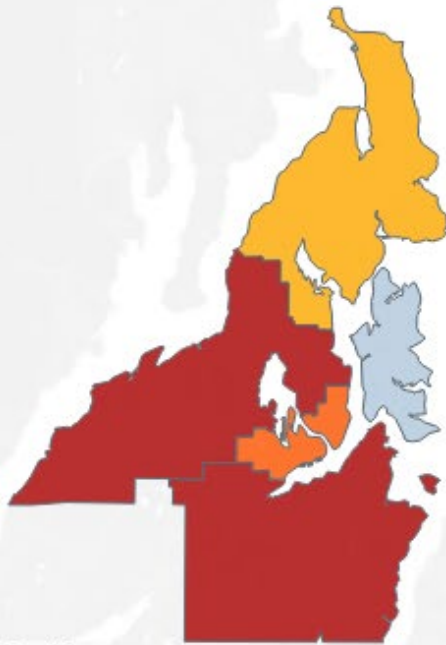
Schools – Regional Community COVID Activity in 5-18 year-olds

SARS-CoV-2 TRANSMISSION IN WEEK ENDING 9/18/2021

5-11

12-18

- Concern - HIGH (300-499 cases per 100,000 in past 7 days)
- Concern - Low (200-299 cases per 100,000 in past 7 days)
- Monitor (100-199 cases per 100,000 in past 7 days)
- Low (<100 cases per 100,000 in past 7 days)



© 2021 Mapbox © OpenStreetMap

Data through 9/18/2021

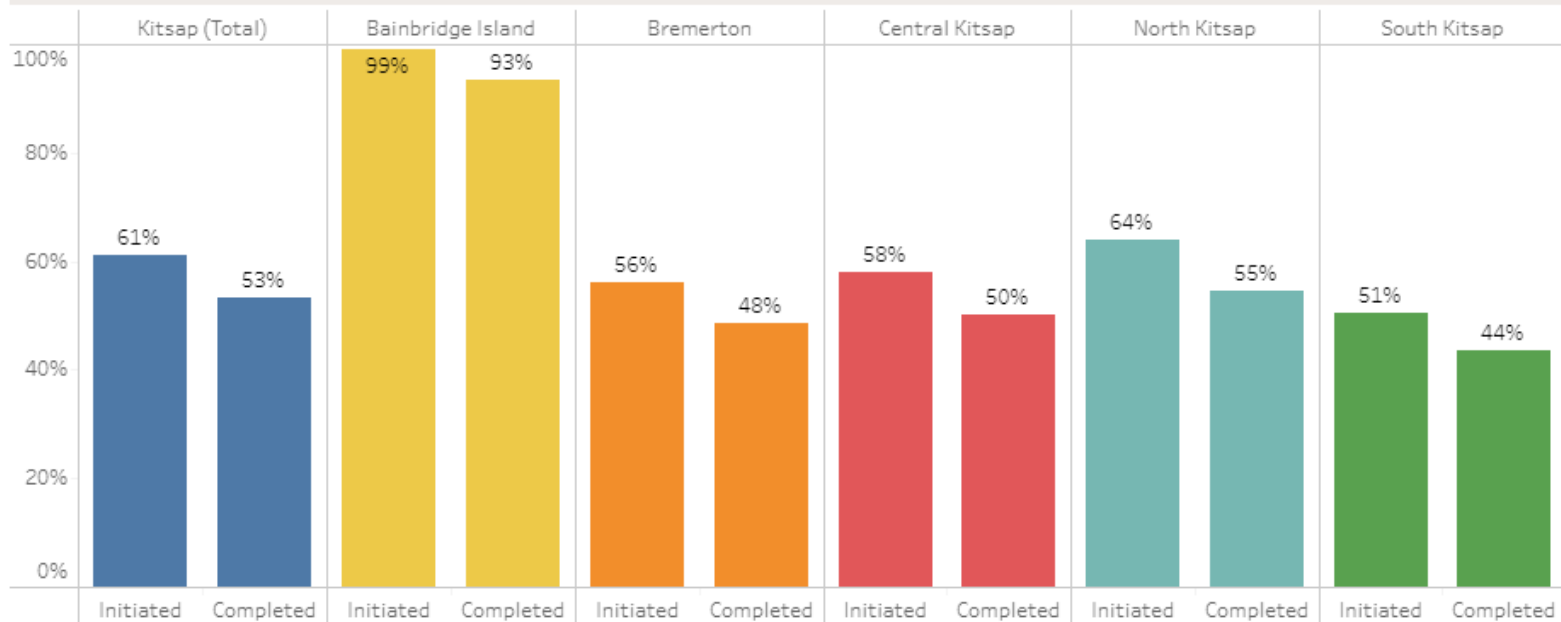


KITSAP PUBLIC HEALTH DISTRICT

Schools (continued)

- **<50% of children aged 12-18 are vaccinated in Bremerton and South Kitsap school districts.**

Percent Vaccinated for 12 - 18 Year Olds by Geographic Region of Kitsap - Updated Tuesdays



Kitsap EMS Update



John Oliver
Fire Chief, Central Kitsap Fire & Rescue
September 28, 2021



KITSAP PUBLIC HEALTH DISTRICT

Kitsap EMS Update

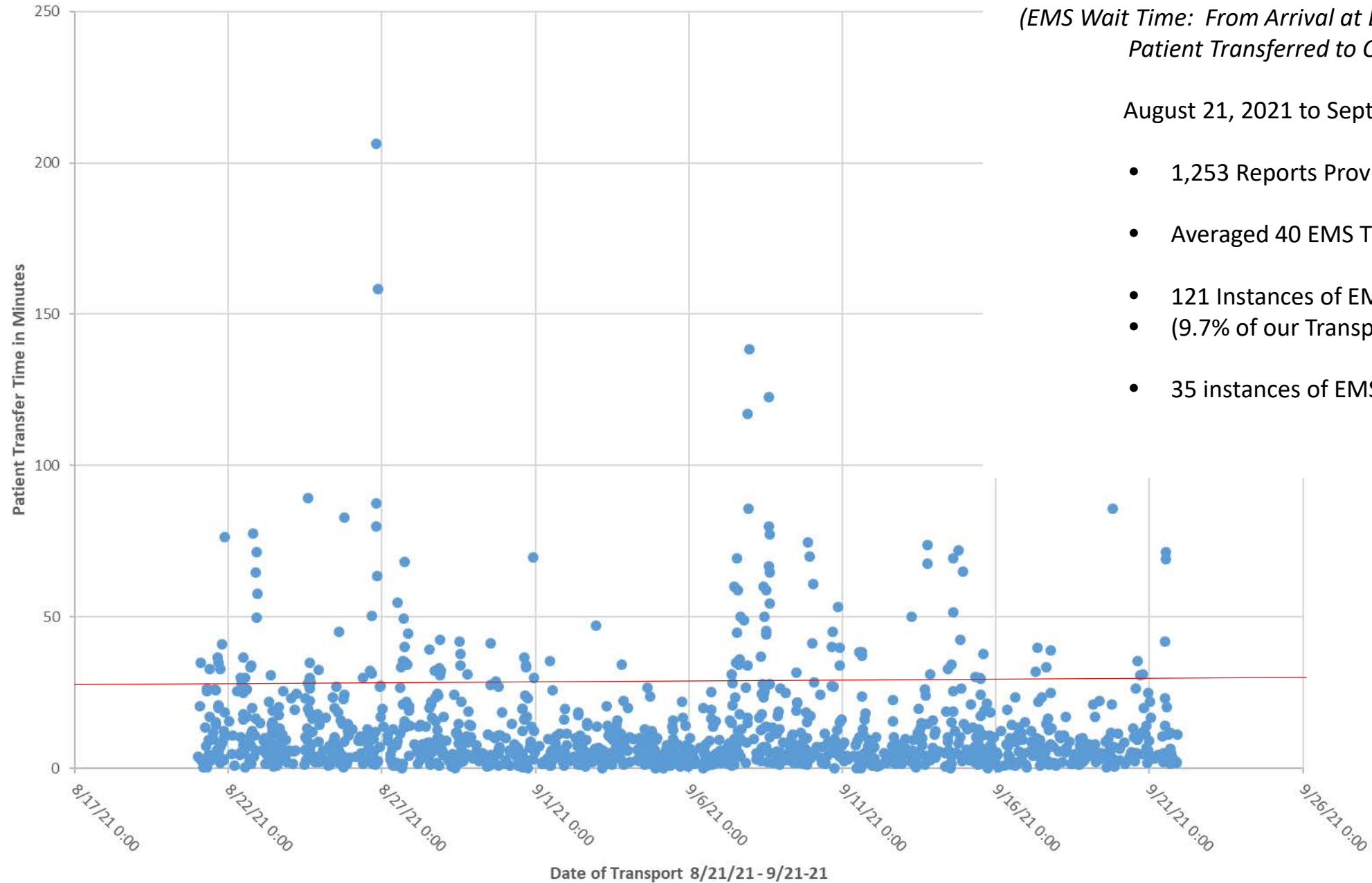


Jim Gillard
Fire Chief, Poulsbo Fire Department
September 28, 2021



KITSAP PUBLIC HEALTH DISTRICT

SMMC - EMS Emergency Department Wait Times
August 21, 2021 - September 21, 2021



SMMC Emergency Department EMS Wait Times

(EMS Wait Time: From Arrival at Emergency Department to Patient Transferred to Care of ED Staff)

August 21, 2021 to September 21, 2021

- 1,253 Reports Provided
- Averaged 40 EMS Transports/Day
- 121 Instances of EMS Wait Time > 30 Minutes,
• (9.7% of our Transport)
- 35 instances of EMS wait times of >60 Minutes

Kitsap Hospital Update



David Weiss, MD
Associate Chief Medical Officer
Vice President of Medical Operations
St. Michael Medical Center
September 28, 2021



KITSAP PUBLIC HEALTH DISTRICT

Kitsap EOC Update



Elizabeth Klute

Director

Kitsap County Department of Emergency Operations

September 28, 2021



KITSAP PUBLIC HEALTH DISTRICT