

# COVID-19 Vaccine Update

Kitsap Public Health Board Meeting  
January 5, 2021



KITSAP PUBLIC HEALTH DISTRICT

# National and State Vaccination Roll-Out

Liz Davis, RN BSN, Public Health Nurse



KITSAP PUBLIC HEALTH DISTRICT

# CDC's Vaccine Recommendations

TABLE. Advisory Committee on Immunization Practices recommendations for allocation of COVID-19 vaccines to persons aged  $\geq 16$  years — United States, December 2020

Phase	Groups recommended to receive COVID-19 vaccine	No. (millions)		
		Total persons in each group*	Unique persons in each group†	Unique persons in each phase
1a	Health care personnel	21	21	24
	Long-term care facility residents	3	3	
1b	Frontline essential workers <sup>§</sup>	30	30	49
	Persons aged $\geq 75$ years	21	19	
1c	Persons aged 65–74 years	32	28	129
	Persons aged 16–64 years <sup>¶</sup> with high-risk medical conditions	110	81	
	Essential workers <sup>§</sup> not recommended for vaccination in Phase 1b	57	20	
2	All persons aged $\geq 16$ years <sup>¶</sup> not previously recommended for vaccination	All remaining	All remaining	All remaining

Dooling K, Marin M, Wallace M, et al. The Advisory Committee on Immunization Practices' Updated Interim Recommendation for Allocation of COVID-19 Vaccine — United States, December 2020. MMWR Morb Mortal Wkly Rep 2021;69:1657-1660.

DOI: <http://dx.doi.org/10.15585/mmwr.mm695152e2external icon>



# Washington State's Interim Plan

- Focused on Healthcare System as vaccinators; equity
- State DOH enrolls providers to receive vaccine, decides on allocations, manages the immunization information system, decide on when to move to next phase
- Has not yet released guidance for 1b and 1c

<https://www.doh.wa.gov/Portals/1/Documents/1600/coronavirus/WA-COVID-19-Vaccination-Plan.pdf>



# Phase 1a

- We are currently in Phase 1a (high-risk workers in healthcare settings, emergency first responders, and long-term care facility staff and residents). Recently expanded to include additional healthcare workers.
- DOH Phase 1 guidance:  
<https://www.doh.wa.gov/Portals/1/Documents/1600/coronavirus/VaccineAllocationPhase1A.pdf>
- Estimate of Phase 1a individuals in Kitsap County:  
at least 9,500 individuals



# HOW IS COVID-19 VACCINE DISTRIBUTED?

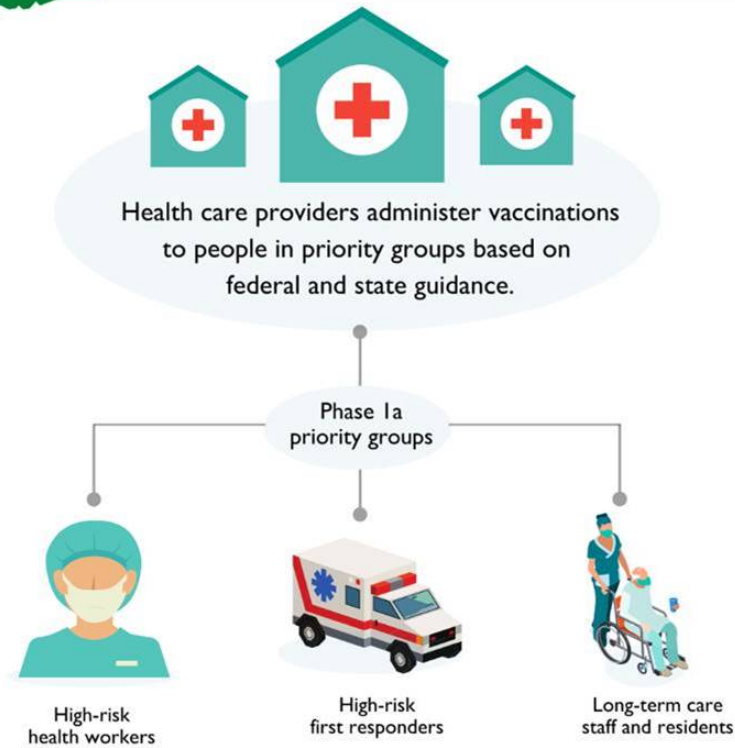
The first phase of COVID-19 vaccination is underway. Here's how it works:



The federal government distributes vaccine to states



The state allocates doses of vaccine to local health care providers

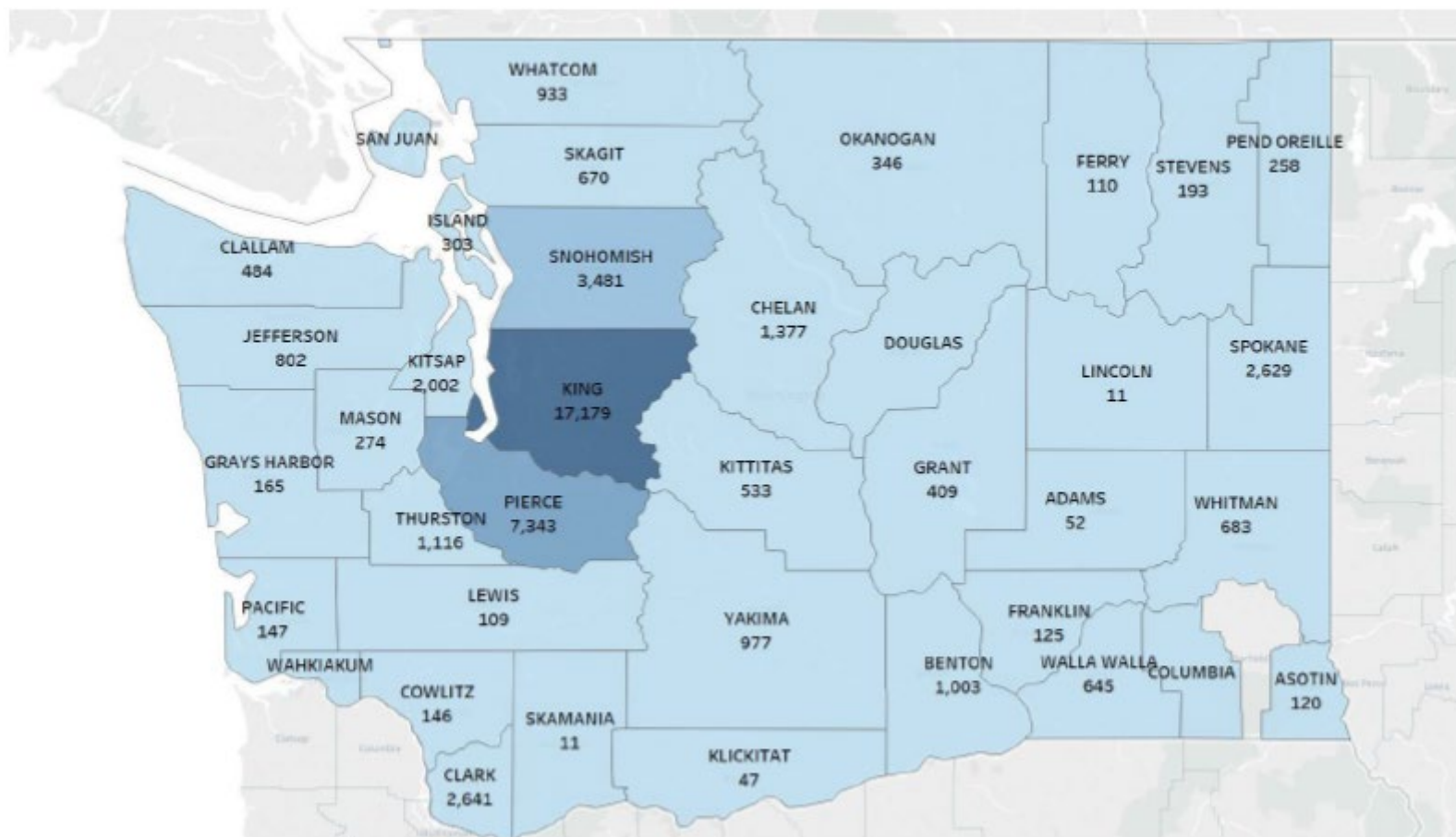


# Federal Pharmacy Partnership

- CDC partnership with CVS and Walgreens to provide onsite COVID-19 vaccines to nursing homes, assisted living facilities, and other congregate living facilities with residents > 65 years old
- **79** Kitsap County long-term care facilities signed up and approved; **3** ineligible
- Program launched last week
- Currently not receiving information regarding sites getting vaccinated.



## CUMULATIVE NUMBER OF COVID-19 VACCINE DOSES ADMINISTERED\* BY COUNTY



Data reported to the WAIS, as 11:59pm December 27, 2020

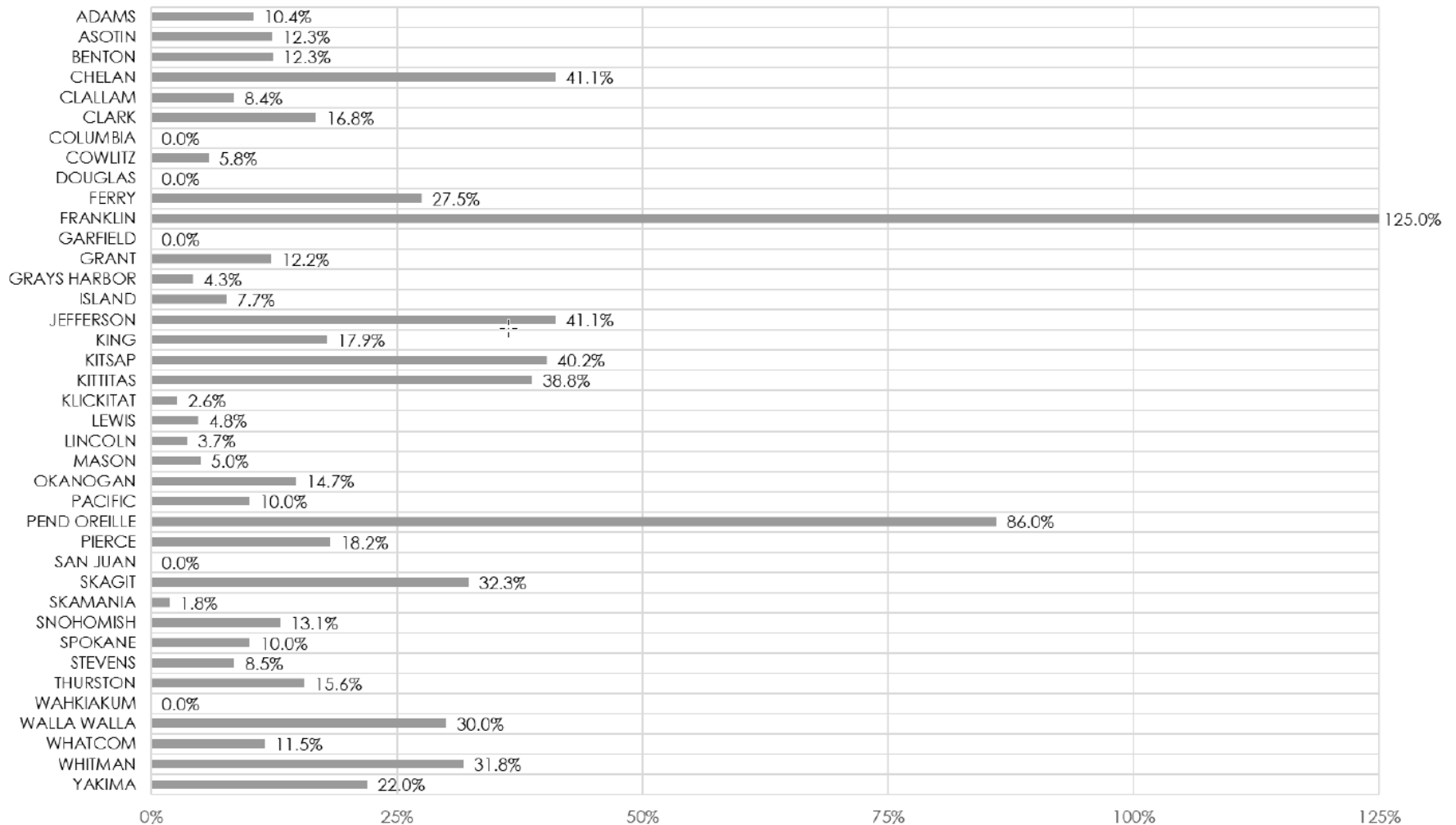
\*County-level doses administered are based on the county of the administering facility

NOTE: The actual number of doses administered may be higher due to a delay in reporting.





## PERCENTAGE OF ALLOCATED COVID-19 DOSES ADMINISTERED BY COUNTY



Data reported to the WAHS, as 11:59pm December 27, 2020



# Kitsap County Vaccination Roll-Out

Liz Davis, RN BSN, Public Health Nurse



KITSAP PUBLIC HEALTH DISTRICT

# Vaccine Allocation – from DOH

	Week 1		Week 2		Week 3		Week 4	
	Pfizer	Moderna	Pfizer	Moderna	Pfizer	Moderna	Pfizer	Moderna
WA State	62,400	0	44,850	127,800	57,525	44,100	56,550 *	44300
Kitsap County	1,950	0	0	3,000	0	400	0 **	2,500

\* WA State is scheduled to receive 50,700 doses of Pfizer booster (second-dose vaccine); which is in addition to this number.

\*\*Kitsap is scheduled to receive 975 booster (second-dose) Pfizer vaccine this week.



# Enrolled Providers (as of 1/2/2021)

- **12 enrolled** Kitsap County healthcare organizations
  - 5 providers have received and administered vaccine
- 10 Kitsap County providers whose completed enrollment application is **pending**
- 17 Kitsap County providers **who initiated** applications

Approved enrolled providers include clinics, hospital, pharmacies

Excludes the federal pharmacy partnership for LTCFs



**Thank you, enrolled COVID-19  
vaccine providers!**



# Challenges

- Not enough providers enrolled
- Inconsistent and abrupt allocations
- 2 different vaccines
- Adverse reaction monitoring
- Liability concerns
- Data entry
- Access to data
- Communications, information-sharing, coordination
- Competing priorities (healthcare, testing, vaccines, etc.)



# Our Long-Term Goal

- 271,000 Kitsap County residents immunized
- DOH's goal is to have “most people in Washington vaccinated by mid-summer”
- This will take a large community-wide effort
- We need the help of Kitsap healthcare partners and our entire community



# COVID-19 Vaccine Data Next Steps

Amanda Tjemsland, MPH, Epidemiologist



KITSAP PUBLIC HEALTH DISTRICT



# KPHD Activities & How You Can Help

Jessica Guidry, Program Manager  
Public Health Emergency Preparedness and  
Response



KITSAP PUBLIC HEALTH DISTRICT

# KPHD'S Role in Vaccination Rollout

- Provide **technical assistance** to enrolled providers and providers wanting to enroll
- **Connect** Phase 1a recipients to enrolled providers to ensure coverage
- Monitor administration **data**; identify **gaps**
- **Coordinate** healthcare community emergency vaccination response efforts
- Stay **informed** of local, state, and federal efforts
- **Share** information with public, partner agencies

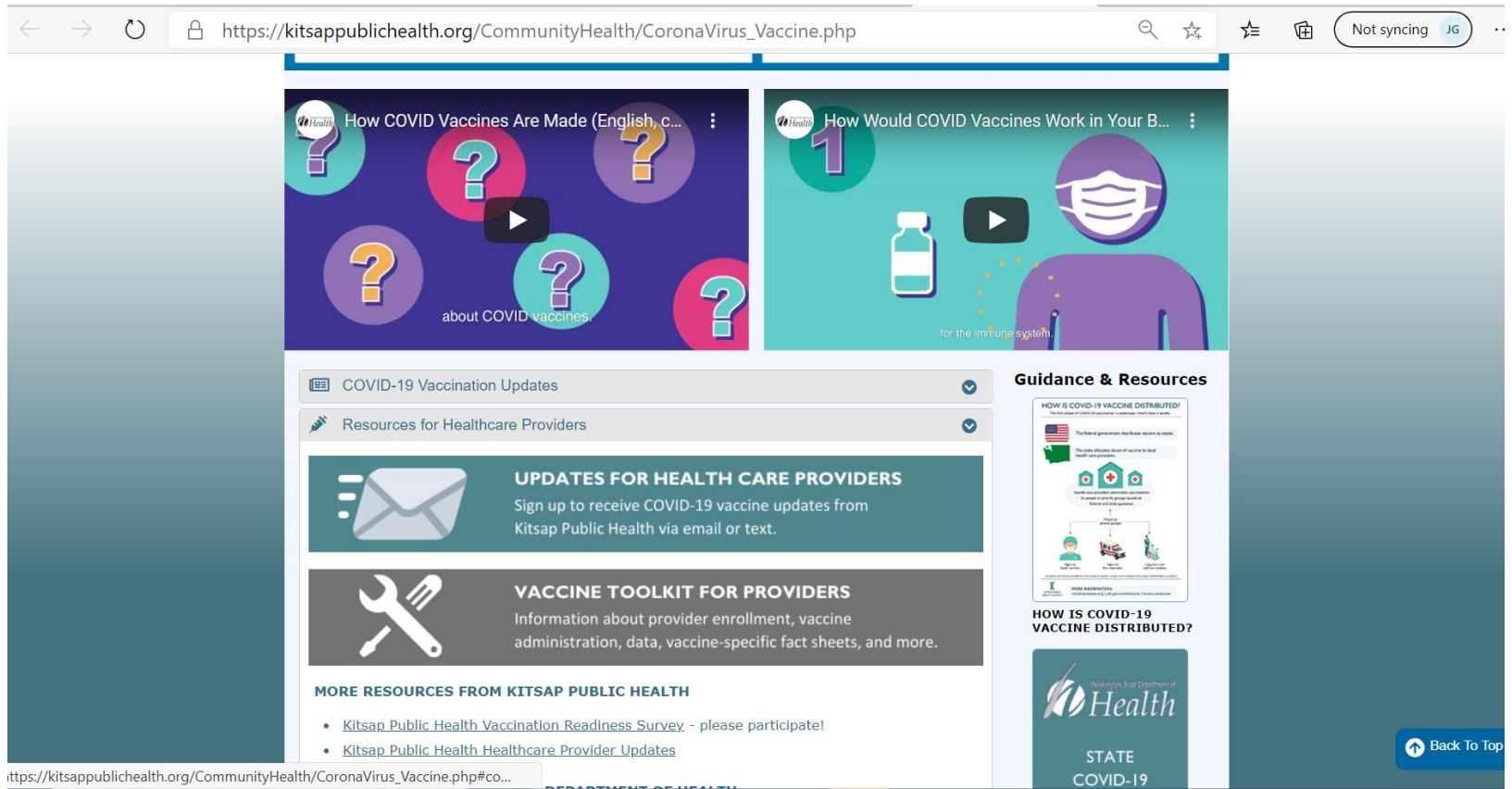


# Local Focus on Equity

- Outreach and website
- Provisional Community Outreach Specialist
- Community Engagement
  - Community Advisory Board
  - Local equity-related meetings
  - Key informant interviews
  - Encourage participating in DOH Collaborative (<https://www.doh.wa.gov/Emergencies/COVID19/VaccineInformation/Engagement/Collaborative>)



# KPHD's COVID-19 Vaccine Webpage



[https://kitsappublichealth.org/CommunityHealth/CoronaVirus\\_Vaccine.php](https://kitsappublichealth.org/CommunityHealth/CoronaVirus_Vaccine.php)



KITSAP PUBLIC HEALTH DISTRICT

# How Can You Help?

- Stay informed
- Share accurate information – help curb the spread of misinformation
- Advocate for local funding and ways to address challenges
- Encourage local healthcare providers to enroll as vaccine providers
- Encourage individuals who can to sign up as local emergency volunteers



# How Can Kitsap Agencies Help? (Cont'd)

- Continue to prevent the spread of COVID-19 by following public health guidelines
  - Wear masks
  - Stay home when sick
  - Avoid large gatherings and gatherings with people outside your household
  - Get tested if you have COVID-19-like symptoms
- Continue being patient – there are a lot of unknowns at this point and a vaccination rollout like this has never happened before



# Stay Informed

- Sign up for KPHD's COVID-19 vaccine listserv and COVID-19 updates
- Sign up for Kitsap County's COVID-19 updates
- Visit [KPHD's COVID-19 vaccine webpage](#)
- Visit [DOH's COVID-19 vaccine webpage](#)
- Visit [CDC's COVID-19 vaccine webpage](#)



# Questions?

