

DIVISION: COMMUNITY HEALTH

PARENT-CHILD HEALTH PROGRAM



HEALTHY BABIES, HEALTHY FAMILIES

Our team of nurses, including childcare consultants, breastfeeding experts, and a community health educator, offer support and education to people who are pregnant, parents of young children, and families to ensure all Kitsap children can thrive in safe, healthy, and nurturing environments.

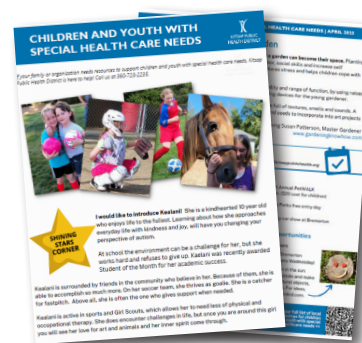
“Every day is so different and I am surprised by how much I learn from my clients. The most rewarding part of my job is getting to know clients and developing a long-term, therapeutic relationship while partnering with them to help them become the best parents they can be.”

Lisa Warren, RN BSN, Public Health Nurse

WHAT WE DO

Our program’s core activities include:

- Coordinating our regional **Nurse-Family Partnership** program, which pairs first-time mothers with a nurse who assists them from their first trimester of pregnancy through the first two years of their child’s life.
- Helping families with **Children and Youth with Special Health Care Needs** find the resources they need, while working to ensure resources are available in our community.
- Providing **Childcare Nurse Consultant** services to promote health and safety at childcare centers.
- Supporting breastfeeding and chestfeeding through the **Kitsap Supports Breastfeeding** campaign and other initiatives.



We launched a *Children and Youth With Special Healthcare Needs* newsletter in 2022 to share resources and inspiration for local families.

- Leading the **Mama Moves Kitsap** postpartum group to encourage healthy activity for new parents.
- Offering **Care Connect**, a program that assists people who have to isolate at home due to a positive COVID-19 test.

Continued on next page >>



2022 HIGHLIGHTS

PARENT-CHILD HEALTH PROGRAM

AT A GLANCE

PROGRAM NAME: Parent-Child Health

SUPERVISOR: Nancy Acosta

2022 FTE STAFF: 9.1

GRANTS & SPECIAL FUNDING SOURCES FOR 2022:

- Maternal Child Health Block Grant
- Department of Children, Youth and Families
- Kitsap County Mental Health, Chemical Dependency, Therapeutic Court
- Department of Behavioral Health and Recovery
- Olympic Educational Service District and Kitsap Community Resources (for Nurse Consultant)
- Healthy Start Kitsap
- Washington Communities for Children
- Olympic Communities of Health
- Kitsap County American Rescue Plan
- KidVantage and Stitch and Serve (for supplies for families)

Thank you to our funders and community partners for their continued support!



LOOKING AHEAD TO 2023

We are looking forward to furthering program offerings created in 2022, including Mama Moves Kitsap and our Children and

Youth With Special Health Care Needs newsletter.

We are excited to join new families in more locations for walks this summer and distribute the next edition of our newsletter!



MAMA MOVES KITSAP

Learn about upcoming events by following us on Instagram at: **@mama_moves_kitsap**

2022 ACCOMPLISHMENTS

Parent Child Health in partnership with Olympic Communities of Health launched the Care Connect program in September.

Care Connect is a free program available to households in Kitsap County who have tested positive for COVID-19 and need support to isolate at home. Care Connect offers hygiene supplies, grocery delivery, financial assistance, case management through isolation, and referrals to ongoing services to support health and social needs.

Since September 2022, Care Connect has fulfilled 125 fresh food grocery orders, assisted 107 households with financial assistance including help with rent, mortgage, and utilities, delivered 55 non-perishable food kits and 140 hygiene kits to residents all around Kitsap.

Care Connect will gradually sunset by the end of June 2023.

2022 BY THE NUMBERS

564 Nurse-Family Partnership (NFP) visits completed online, by phone, and in person

502 hours spent with NFP clients

65 families and **51** infants served by NFP

8 families graduated from NFP after approximately 2.5 years of visits

LEARN MORE & CONNECT

360-728-2235 | kitsappublichealth.org | pio@kitsappublichealth.org

345 6th Street, Bremerton, WA 98337

Scan this QR Code with your smartphone camera to visit our program page.

